



# KH 281

Total 281 sqm

Length: 30.80

Width: 19.66

2 Bath

5 Bed

A1 Kit home price:

**\$273,831\***

Because every build is different, contact your local A1homes representative to help with the additional costs for your build.

**\*IMPORTANT TERMS AND CONDITIONS (PLEASE READ)**

All A1homes are relevantly priced to the region you intend to build in. Pricing is based on standard plans with no cost allowance given for alterations. These prices are subject to change, as a result of increases in the cost of suppliers' materials, services and labour etc. For our most up-to-date prices please see [A1homes.co.nz](http://A1homes.co.nz) or contact your nearest A1homes representative.

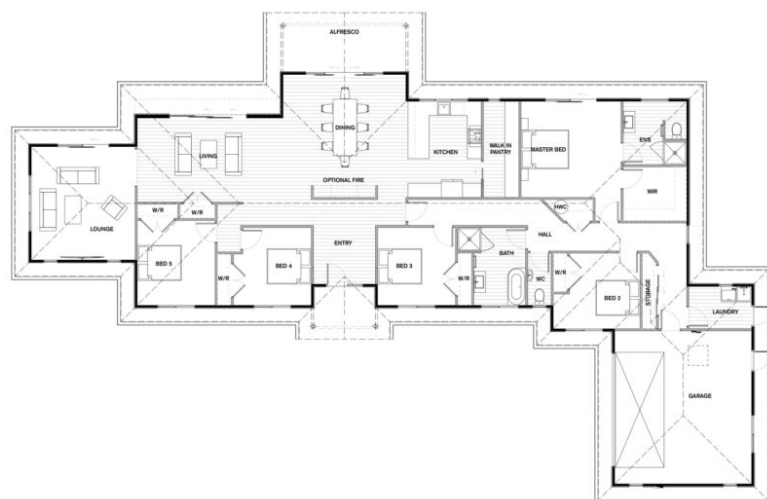
## Hi, we're Rosie and Paul

At A1homes Wellington, we are here to make things easy. Whether choosing from one of our plans, or creating something a little different, contact us and discover the easiest way to get the home you want.

t: 04 977 3501  
e: [rosie.reid@a1homes.co.nz](mailto:rosie.reid@a1homes.co.nz)



## Floorplan



© COPYRIGHT A1homes 2020.

Any attempt to copy these plans in any way will incur legal proceedings from our patent attorneys. All floor areas and sizes are to be confirmed on full permit plans. All images are artist impression only.

[www.A1homes.co.nz](http://www.A1homes.co.nz)

**A1homes**   
keeping it **KIWI** 